

ALLDAY  
& MILLER



Tudor Road, Hayes, UB3 2QE  
£500,000

3 1 1 c



Tudor Road, Hayes, UB3 2QE

**£500,000**

- Three Bedrooms
- Freehold
- Chain Free Sale
- Through Lounge
- Easy Reach To An Elizabeth Line Station
- Semi-Detached House
- Ample Potential To Extend STPP
- Driveway
- Close To The Uxbridge Road
- Good Schools Nearby

## Description

This semi detached house offers a wonderful opportunity for those looking to create their dream home.

Upon entering, you are greeted by a reception room which flows seamlessly into the dining area, enhancing the practicality of the living space. A fitted kitchen completes this floor.

Rising to the first floor, you will find three comfortable bedrooms, complemented by a family bathroom.

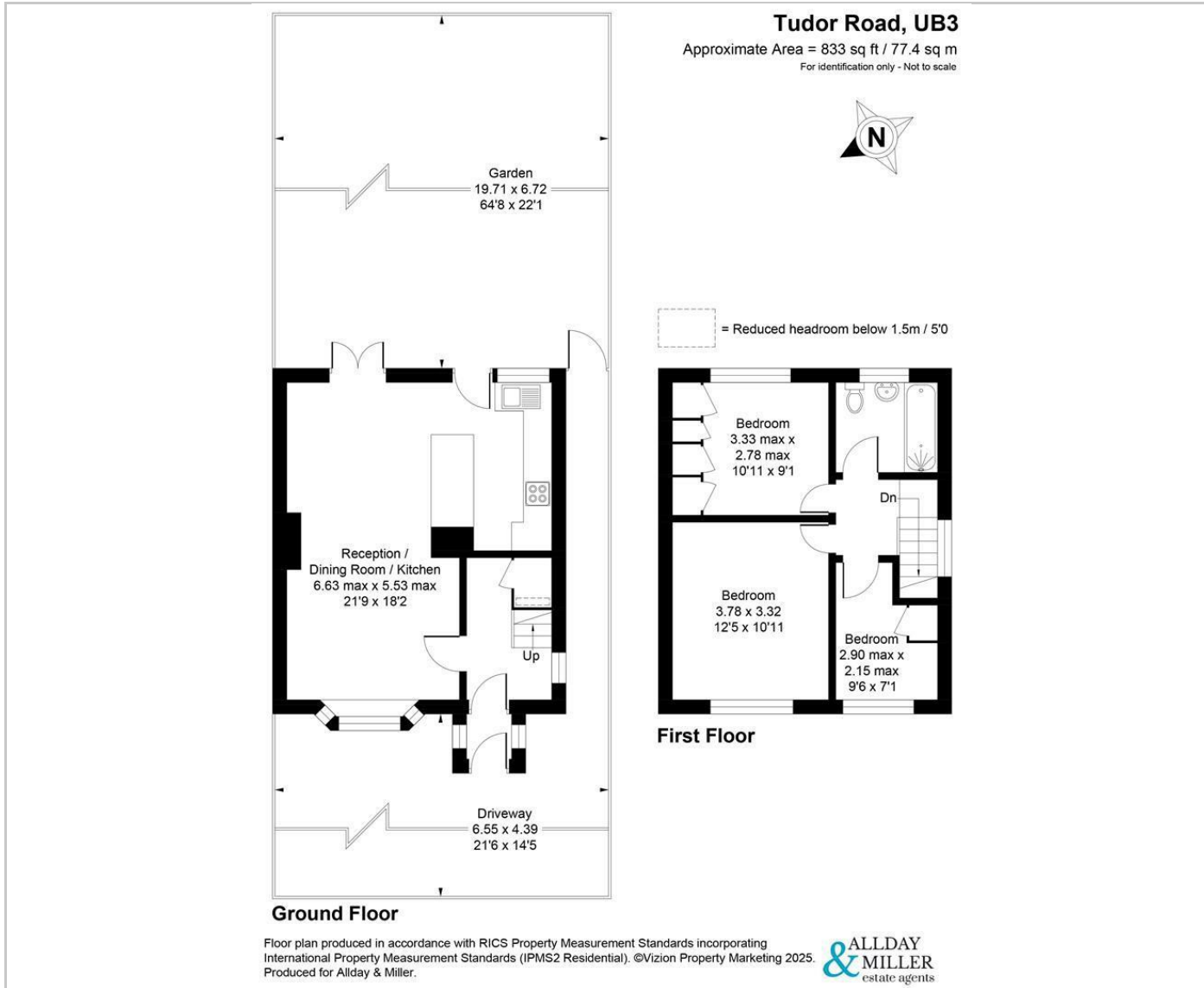
The exterior of the property with a front drive offering off-street parking, a valuable asset in this bustling area. To the rear, a private garden awaits, predominantly laid to lawn.

## Situation

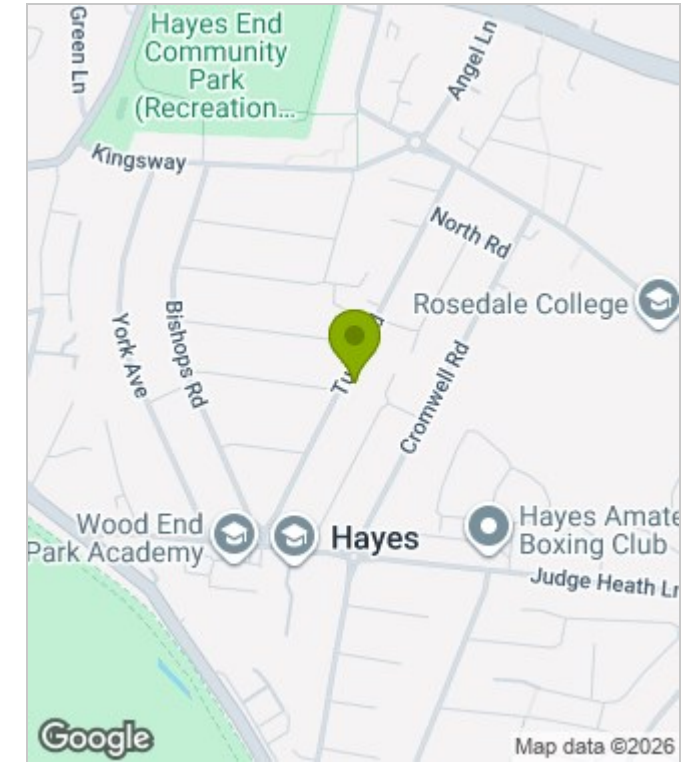
Tudor Road ideally located near the Uxbridge road with its variety of local shops, supermarkets, cafes and coffee shops. A number of highly regarded schools close by including Rosedale College and Botwell House Catholic primary school. Hayes and Harlington station just a short drive away with the Elizabeth line giving easy links to central London and the surrounding. Several local bus routes also giving links to local amenities such as Brunel University, Stockley business park and Heathrow airport.



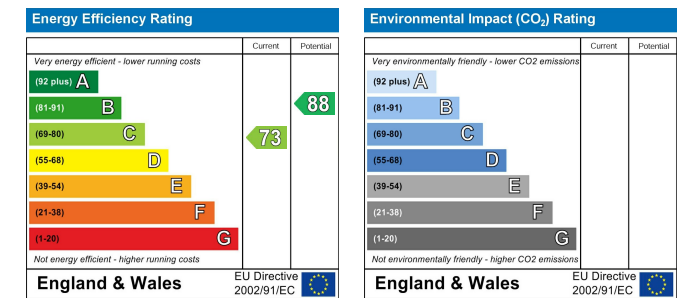
## Floor Plans



## Area Map



## Energy Performance Graph



These particulars, whilst believed to be accurate are set out as a general outline only for guidance and do not constitute any part of an offer or contract. Intending purchasers should not rely on them as statements of representation of fact, but must satisfy themselves by inspection or otherwise as to their accuracy. No person in this firm's employment has the authority to make or give any representation or warranty in respect of the property.